

Online Installation Guide - DataForce Client Software

This guide will show you through the installation and set up your new backup software or demonstration. Pictures of each step are provided to help you along the way, if you would like to enlarge a picture, simply click on it and use your browser's back button to return to the tutorial.

To begin, click the LOGIN link on the black menu bar above, and choose [LOGIN] for the service to which you have subscribed. This is very important, as your account will not be found if you click the wrong one. Almost all new accounts will be on the Cost Smart server, and all trial accounts as well. If you have any problems or questions, please email info@circadianforce.com or call us at 1-877 DATA 247, and dial 3 for the technical support mailbox.

Benefits:

- Easy to use
- Fully Automated
- Daily backup
- Save you time and money

At a glance:

- Backup your data automatically every day
- Access your data anywhere, anytime
- Retain all backup files, even those that have been deleted
- Backup your data to our secure data center
- Fire? Earthquake? Typhoon? Your data is always safe

User Login

Login Name: Example

Password: *****

[Forgotten your password?](#)

Troubleshooting:

- Check to see if your "CAPS LOCK" is on. Both the Login Name and Password are case sensitive.
- If you have forgotten your password, you can use the [Forgot Password Page](#) to retrieve your password.
- Please check if your system clock is correct. Cookies may function incorrectly if your system clock is incorrect.

CIRCADIAN FORCE

Done

After clicking on the Login link, enter the username and password for your account. Then click Login.

http://vault.circadianforce.com - DataForce Management Console - Mozilla Firefox

[Restore](#) | [Install Software](#)

Profile | [Backup Set](#) | [File Explorer](#) | [Report](#) | [Statistics](#) [Logout](#)

User Summary

Quota	Data Area*	Retention Area*	Total Upload*	Total Restore*
50M	0 [0]	0 [0]	0 [0]	0 [0]

* Unit : Compressed Size [Total No. of Files]

User Profile : Mark1

Alias :

Language :

Timezone :

Contact

- 1. Name: [Remove]
Email:
- 2. Name: [Add]
Email:

Add-on Modules : Microsoft Exchange Server (Disable) , Microsoft SQL Server (Disable)
Oracle Database Server (Disable) , MySQL Database Server (Disable)
Lotus Domino (Disable) , Lotus Notes (Disable)
In-File Delta (Enable) , Volume Shadow Copy (Enable)

CIRCADIAN FORCE






javascript: document.forms[0].action='/obs/user/addContact.do'; document.forms[0].submit();

This is the main screen of the online management console. It shows your contacts and basic backup information. Begin by entering your name and email address under the contacts section. Click the [add] button to the right. This will allow you to receive backup reports generated after every backup job. Please insure that you do not remove the e-mail contact reports@circadianforce.com, as that is how our system generates and manages reports of your backup.

Next, click the Install Software link at the top left of the console to install the client software on your computer. Please note that one account will not serve multiple machines, installing the client software on multiple servers with the same account will cause errors.

http://vault.circadianforce.com - DataForce Management Console - Mozilla Fire...

Select your Operation System

				
---	---	---	---	---

Installation Guide - OBM - Windows [Print](#)

System Requirement

- ◆ Operating System : Windows 95 / 98 / ME / NT / 2000 / XP / 2003
- ◆ Memory : 128 Mbytes
- ◆ Disk Space : 100 Mbytes
- ◆ Network Protocol : TCP/IP (Http/Https)
- ◆ Additional Requirement:
 - ◇ Windows 95 - Please download and install Windows Socket 2 Update for Windows 95 ([w95ws2setup.exe](#))
 - ◇ Windows NT / 2000 / XP / 2003 - Please make sure you have logged onto Windows using an account with administrative privileges

Download

DataForce - [obm-win.exe](#)

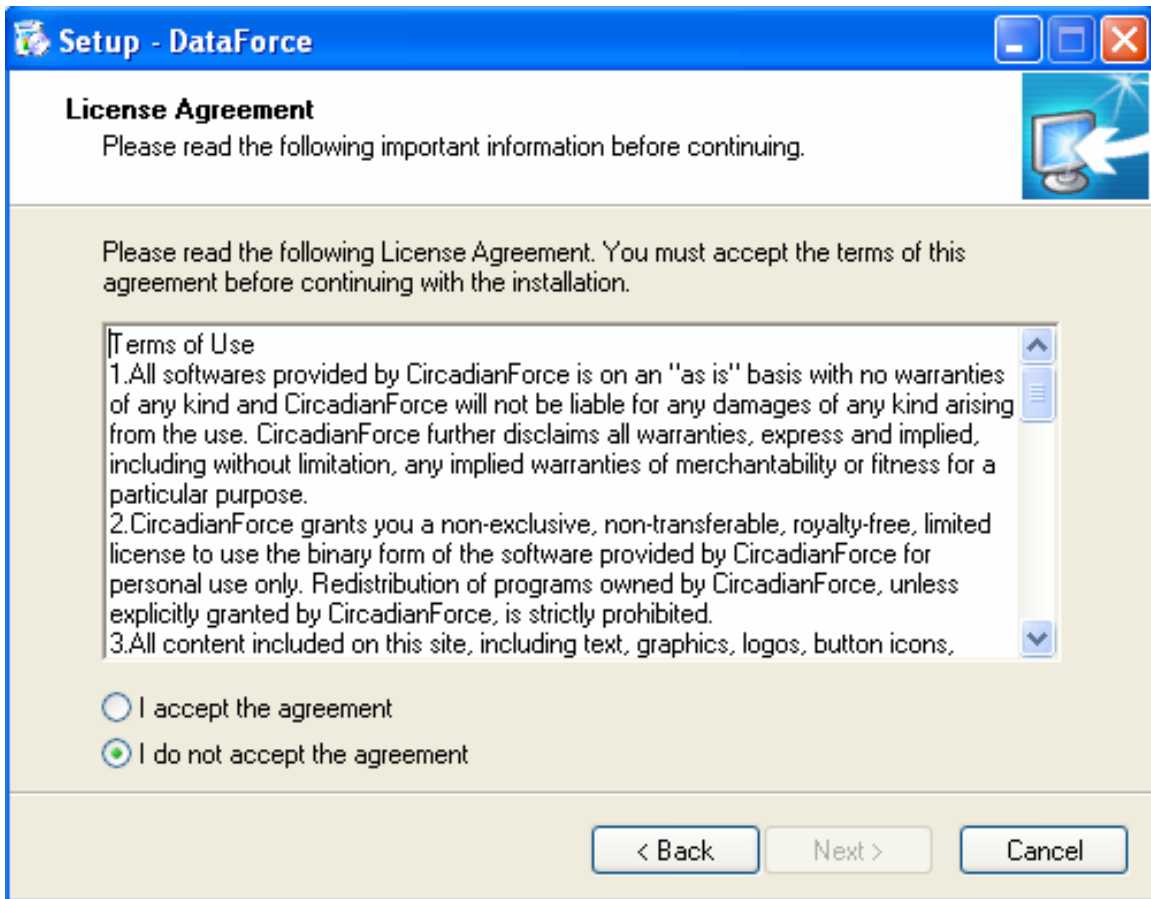
Get Started

1. Download the setup file (obm-win.exe) above and run it
2. Follow the instructions on the installation wizard to complete installation
3. When finished, a new icon (OBM) will be installed to the system tray (near the clock) automatically and OBM will be launched automatically.
4. (optional) Enter the backup server host name in the [Address] field and press the [Next] button.
5. If you don't have a backup account, select [Trial Registration] and press the [Next] button

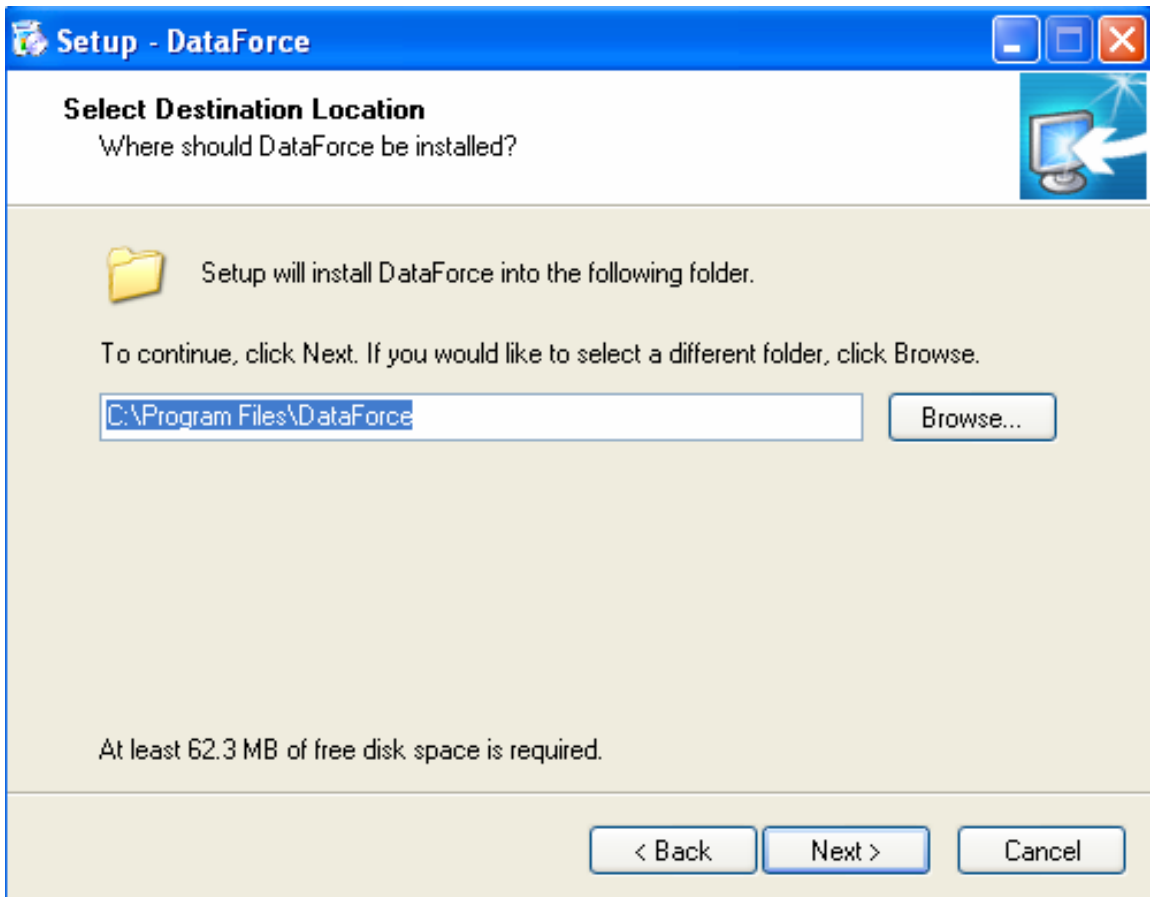
The first window that pops up will ask you to select which operating system you are using. Select the appropriate operating system from the icons at the top of this page. Then click the download link in the middle of the page. Your web browser will now download the installer.



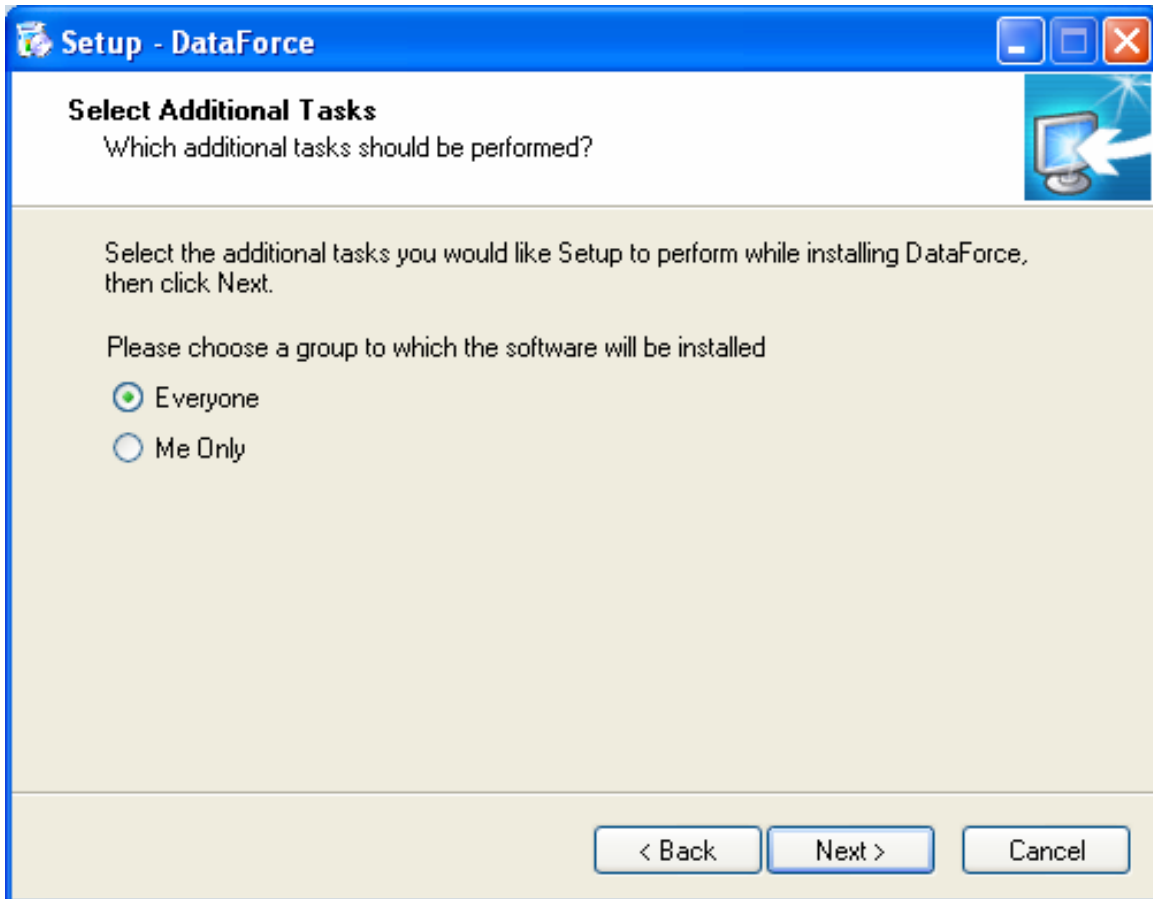
Now open the installer that is downloaded. That will open the setup wizard, click next.



The next screen is the licensing agreement. Read through this information and then click I Agree and next to proceed.

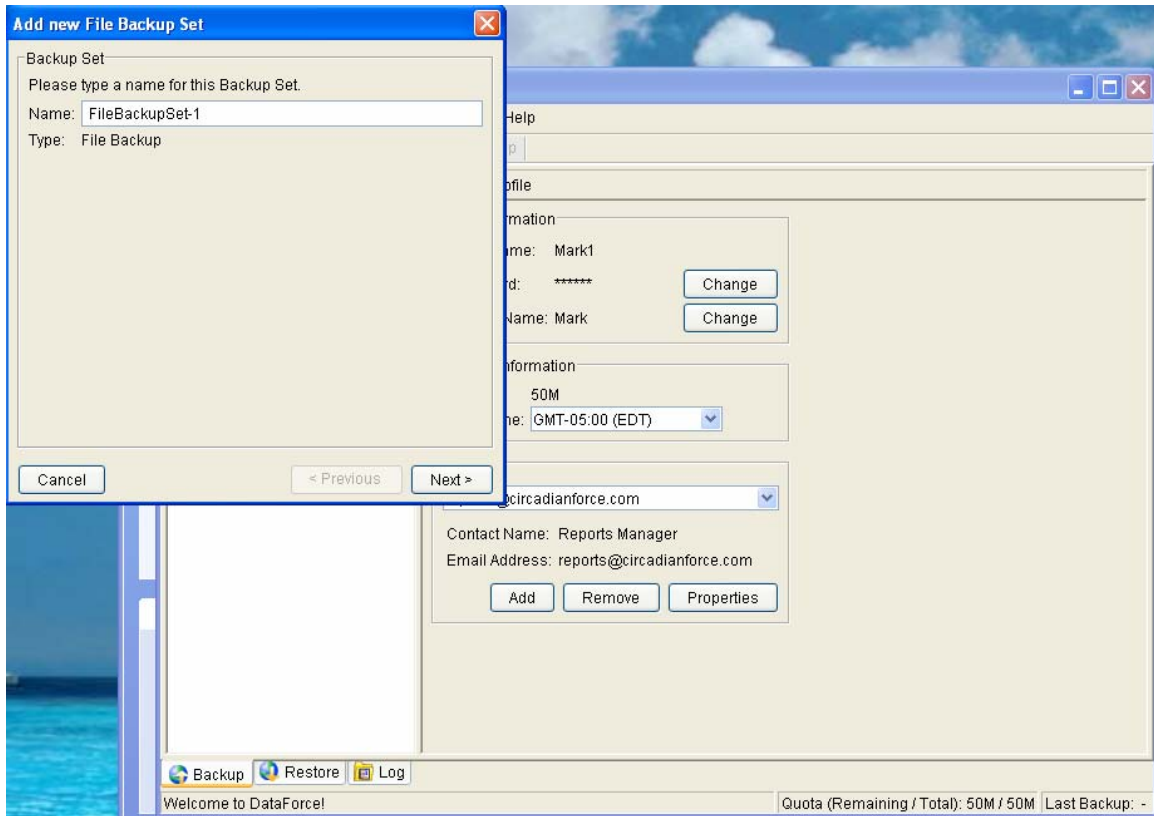


Next, you must choose a path to which the DataForce program will be installed. By default it goes in the C:\Program Files directory, but you can set it to anything you like. Click the next button when you are ready to continue. The screen that comes up will ask you what you would like to name DataForce's start menu shortcut, DataForce is default but anything will do.

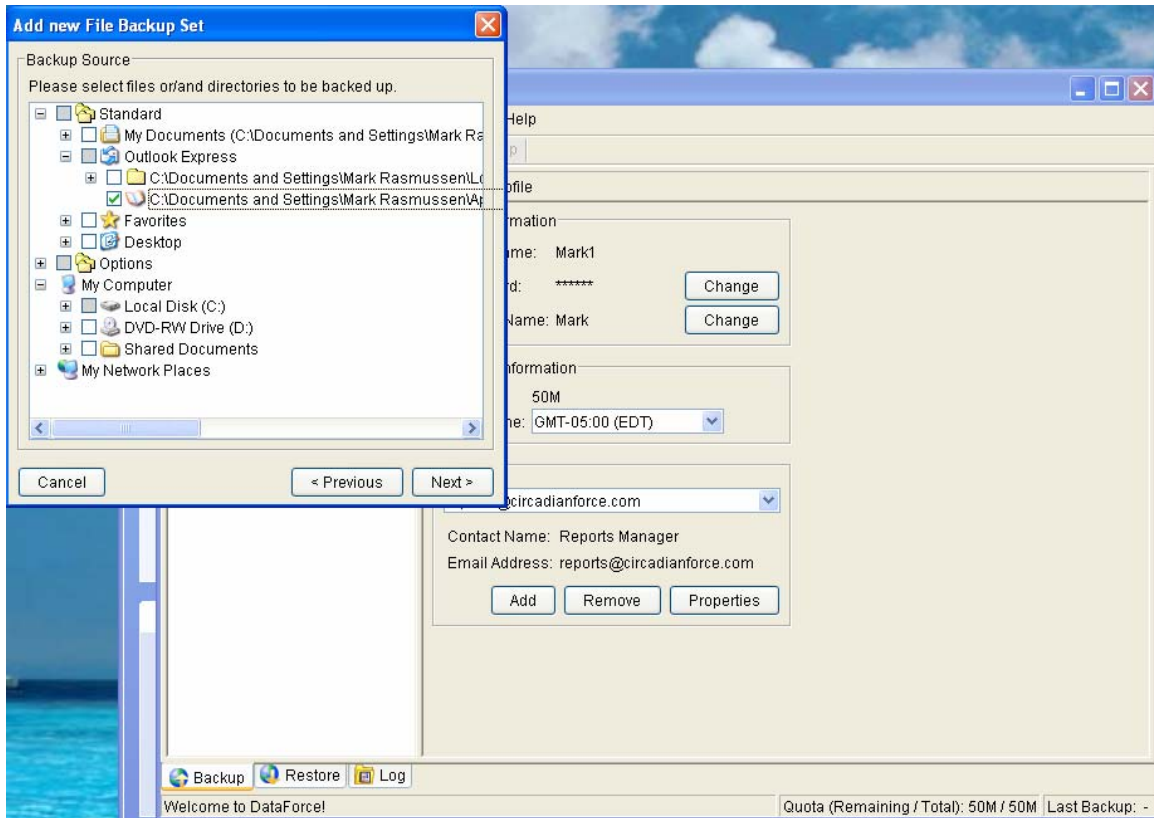


Then, in the next screen select the users that should have the software, ie if the only one managing the backup is you then you should be the only one with the client software.

The next screen asks if you have a user login or not. If not you may use the client for trial purposes. Even if you are a trial account you may have to click on User login to login if you already have a trial name and password.

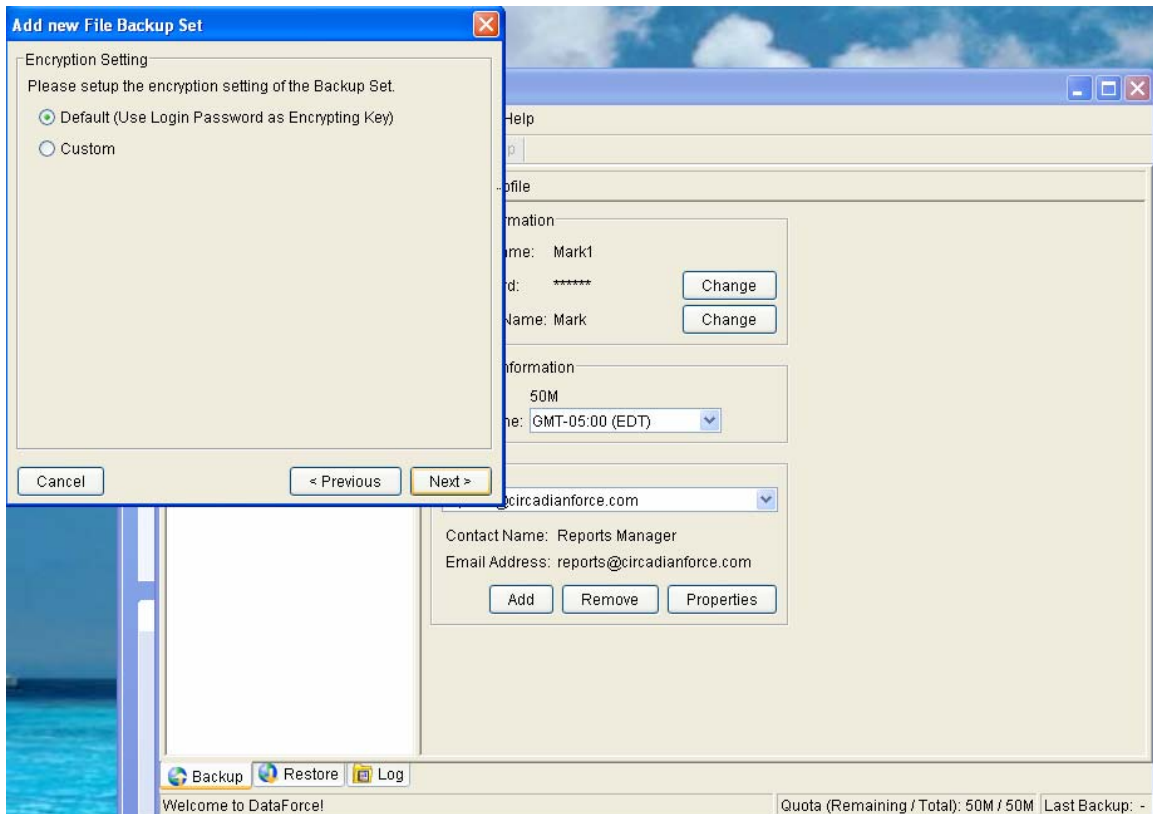


The next window is a popup that asks that you name your backup set. The default is FileBackupSet-1, the only reason that you would want to change that is if you have multiple sets such as MSSQL or Exchange backups.



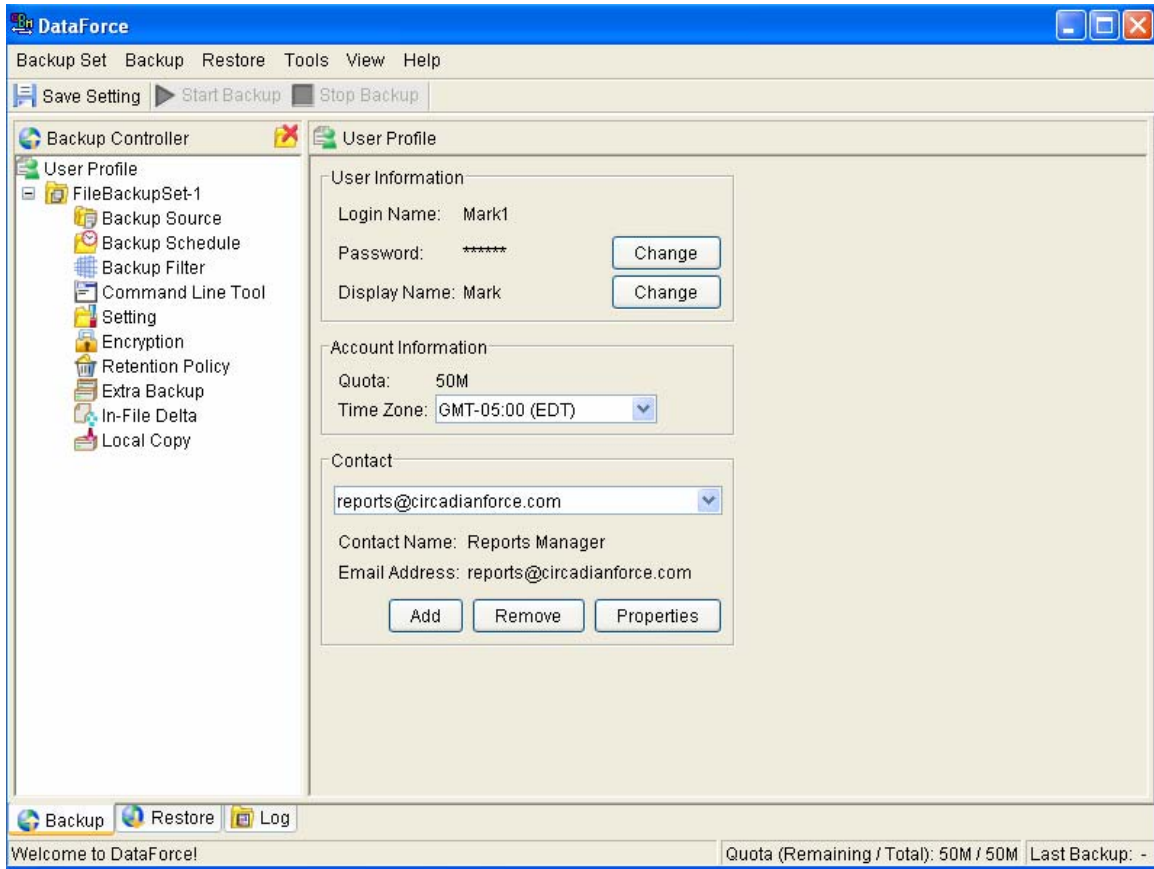
Next you must select the items that you want backed up. This display allows you to uncheck certain things that wouldn't be necessary for backup. Please do not backup videos or music files as they will slow the backup tremendously and they are not usually important data.

Next you must set up a schedule for the backup. You may click on properties to see the backup schedule and the frequency of backup. You may also add or remove backups as you desire. By default, the scheduler is set to run daily at 21:00 (9:00 PM) until finished. If you would like to change this, select BackupSchedule-1 and click Properties. Our servers undergo a huge activity spike at this time so if it is convenient to offset it an hour or two that would shorten the backup time.

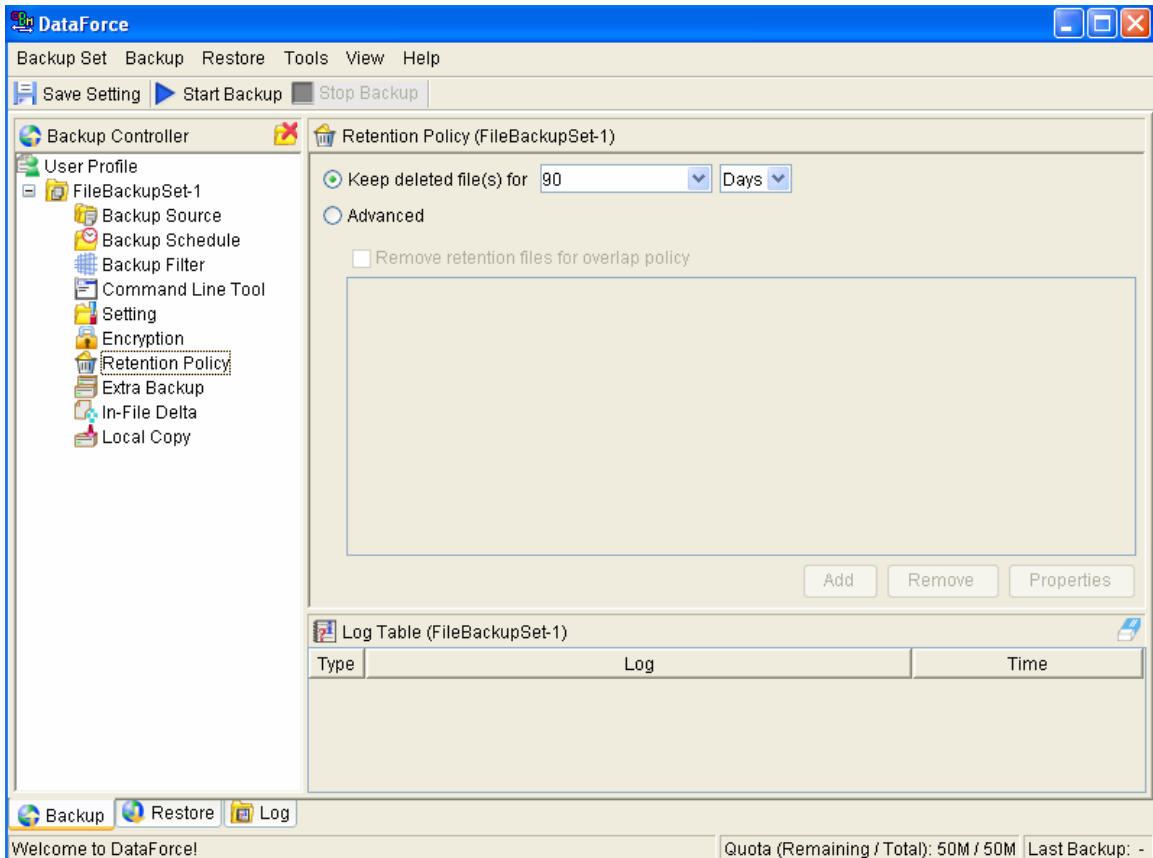


This screen allows you to pick your encryption key. Without it you will not be able to retrieve your data. Furthermore, if it is lost we aren't able to retrieve it for you, so keep it someplace safe. You may choose to create your own encryption key, or use your user login and password as your key. Click Next to continue.

NOTE: Circadian Staff will not have access to your encryption key so make sure you write it down! If you do not have your encryption key we will not be able to restore your data!



This is the main screen. Here you can change your password by clicking on the Change button. You can also add contacts here. To get to some additional options for your backup set click the "+" symbol beside the backup set on the left.



This will drop down several additional menus. Click on retention policy. Set the number of days you would like to keep deleted files and old versions of changed files. The default is 90 days. Now you can close the management console.

Now that installation and setup are complete, it is best to restart the scheduler service (For NT/2000/XP/2003 users only). To do this, go into the control panel and click on the Administrative Tools menu.

Now DataForce is fully installed and ready to go.

This completes the installation and setup! You are now ready to begin running backups.